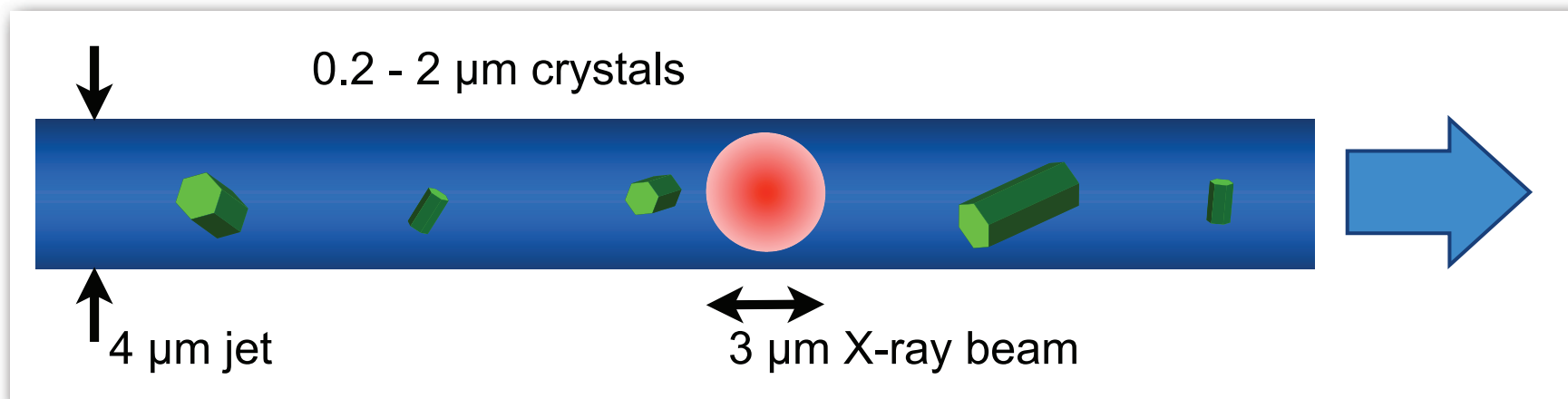
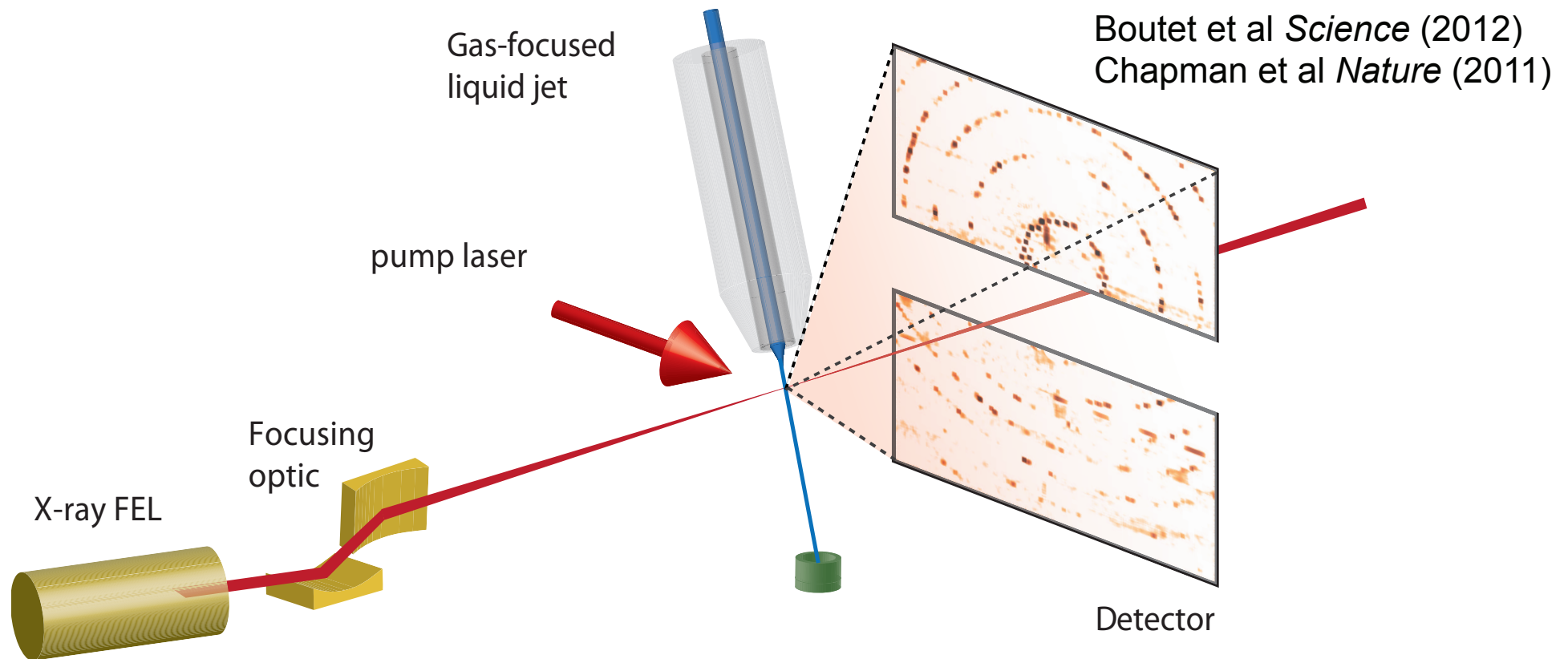
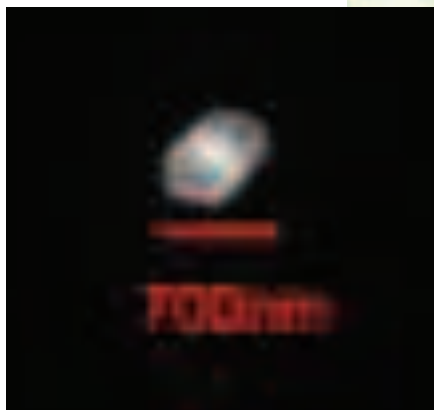
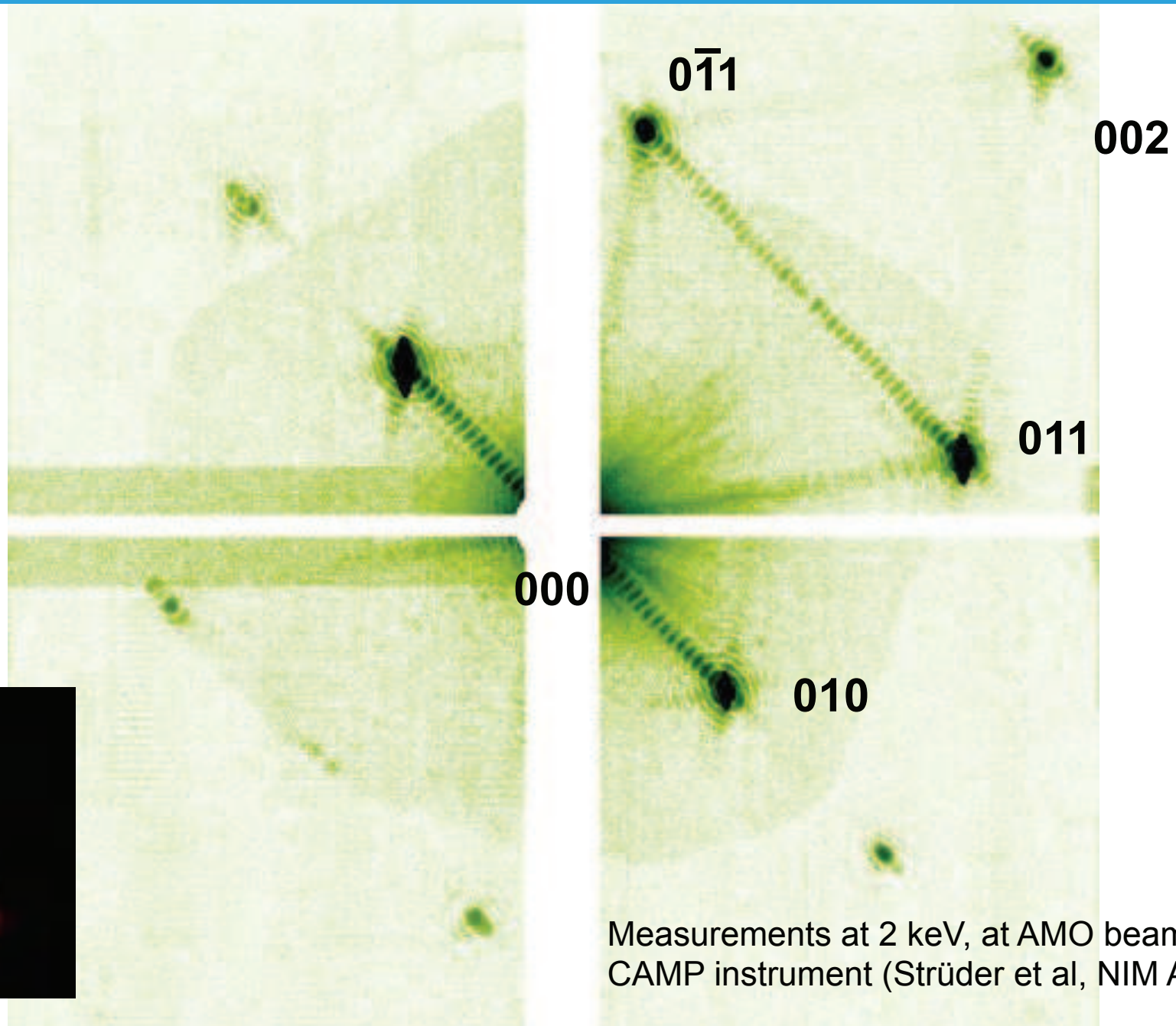


# Nanocrystallography is carried out in a flowing water microjet

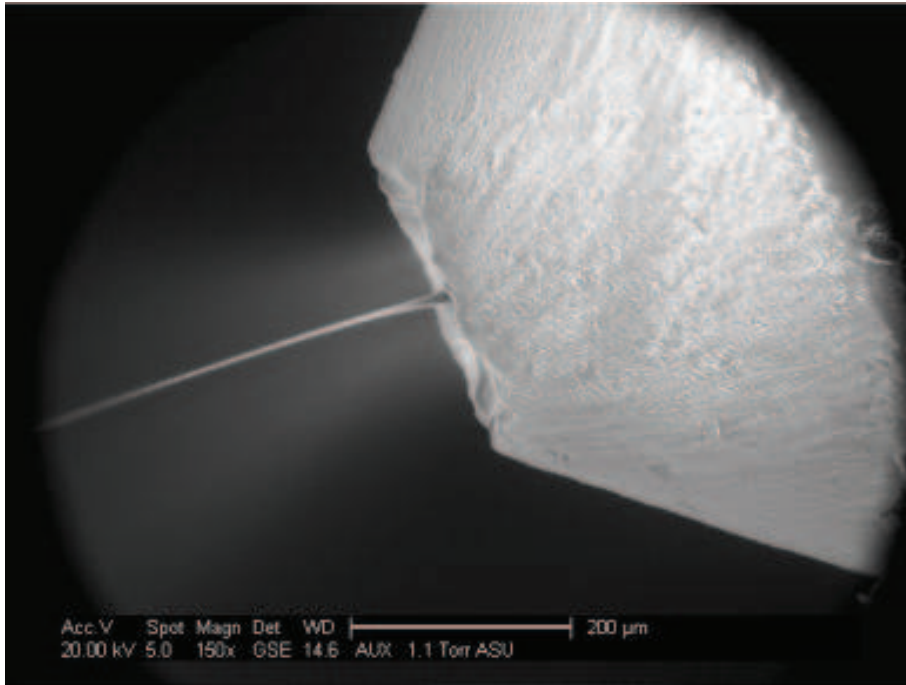


# The crystal shape can be used to obtain additional information about the molecular transform

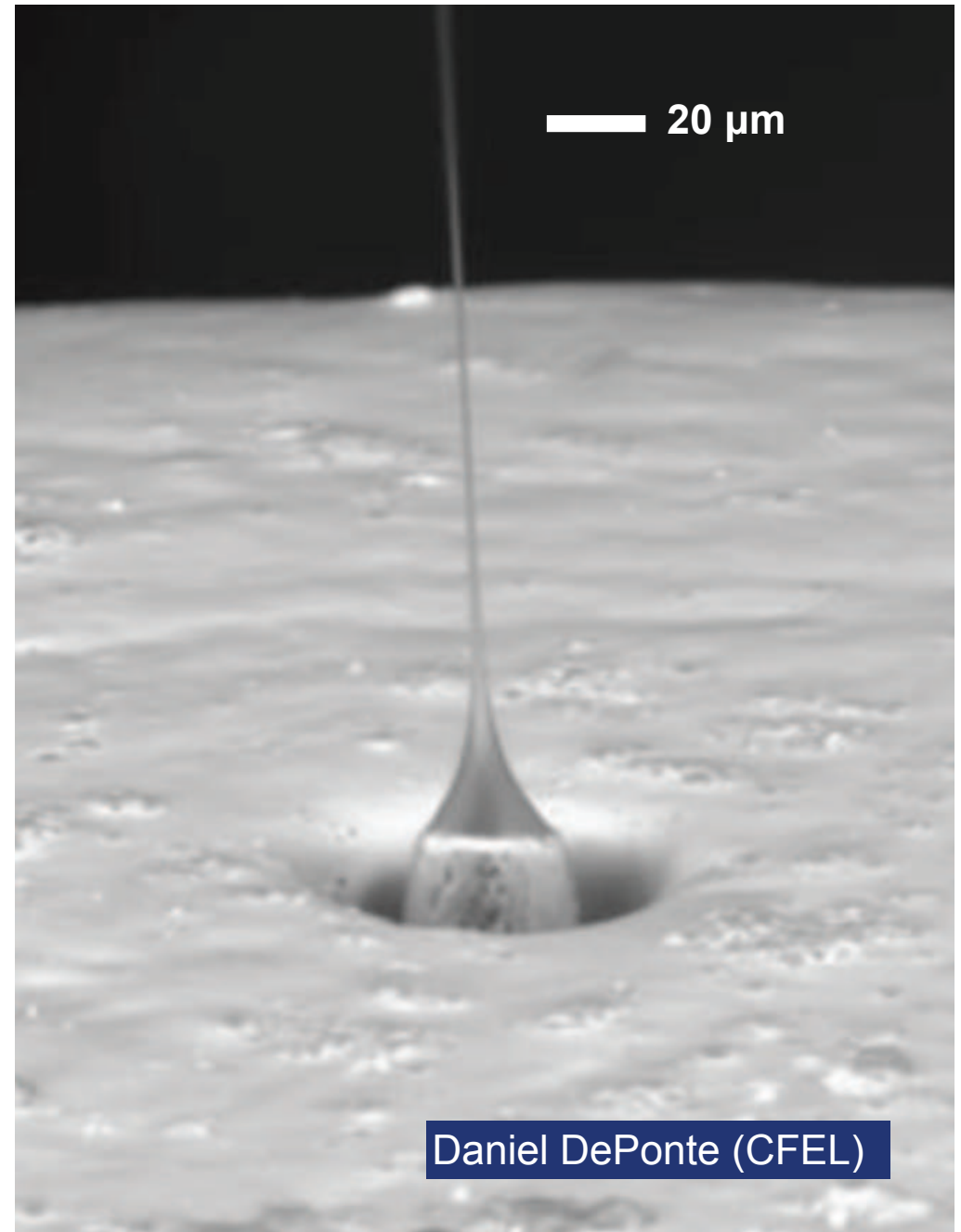


Measurements at 2 keV, at AMO beamline in CAMP instrument (Strüder et al, NIM A 2010)

# Samples are delivered to the beam in a liquid jet



DePonte et al J. Phys. D (2008)  
Weierstall, Spence, Doak, RSI (2012)



Daniel DePonte (CFEL)